

## Setting resolution and viewing method in MyAlbum exe show

How to do that (see the title)?

Run exe show made by MyAlbum and then press S key to pause the slideshow (the music will continue, but the picture will freeze). Press Ctrl+Alt+P to show the Setup screen (see Figure 1):

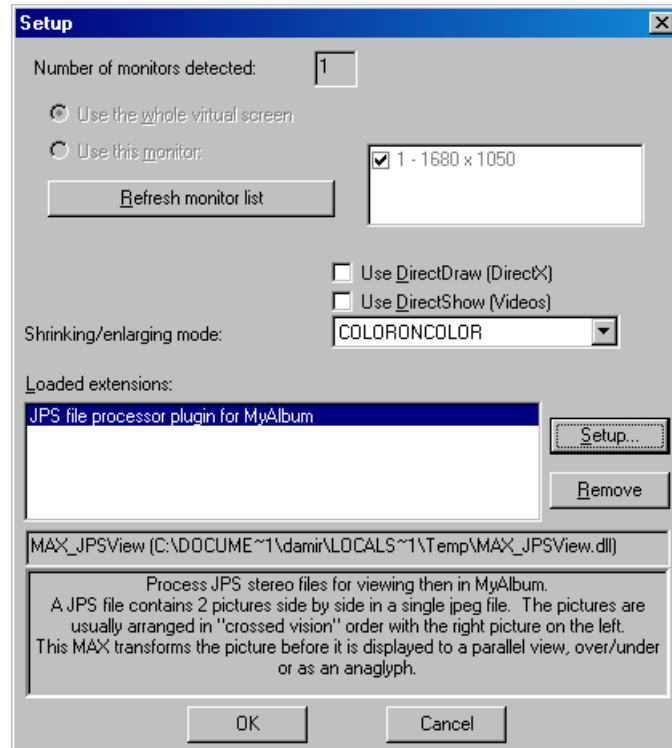


Figure 1: Setup screen

Click “Setup” button. The JPS-View MAX Setup screen appears (see Figure 2). Here you can set-up the resolution and viewing method. At first you should check “Files with the following extension” and “Pictures that have a ratio...”. Write number 0.5 or less as indicated above. This means that all the pictures (inside exe file) which have extension \*.jps or width/height ratio higher than 0.5 will be treated as stereo (in this case practically all the pictures – can you imagine having parallel stereo picture W/H ratio lower than 0.5? I can’t. ☺ ).

**Processing type** is the first “key” option. Here you can select plenty of different stereo options (for anaglyph use Half-Colour Anaglyph, as shown above, for interlaced, use Horizontally interlaced or Vertically interlaced options, etc...)

The **screen resolution** is adjusted in Options section. Don’t forget to check “Resize JPS” and “Center JPS horizontally”. Note that resolution (right to “Resize JPS” check) should

be set for a single screen even though you may use two. For example, when using two projectors, each with 1400x1050 resolution, write 1400x1050.

Click OK button(s) to save the settings and have fun!

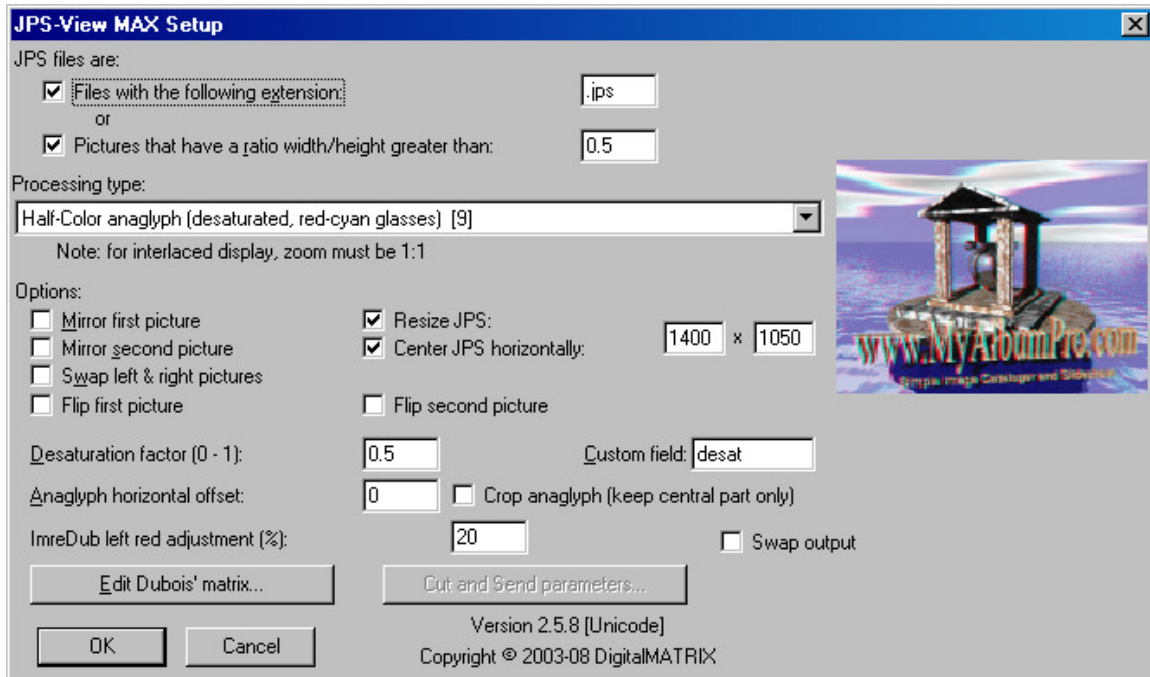


Figure 2: JPS-View MAX Setup screen for setting pictures considered as stereo, a viewing method, and the screen resolution.